

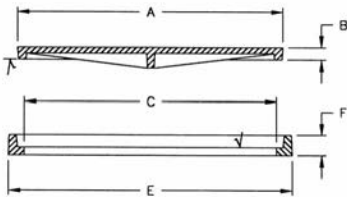
V-1700 FRAME & COVER

Heavy duty
Machined bearing surfaces
Uses V-1600 cover
Uses V-3600 grates

Options
Solid and vented covers
Special lettered covers
Custom logo covers



Illustrating V-1700-3



NOTE:
Rings must be cast into concrete
for heavy duty application.

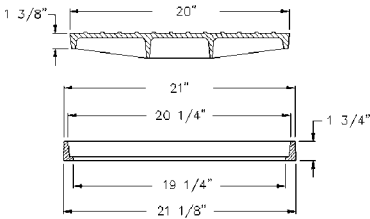
V-1700 Frame & Cover

Catalog Number	A Cover Diameter	B Cover Thickness	C Clear Opening	E Flange Diameter	F Frame Height
V-1700-1	19 1/4	18 1/8	1 1/2	21	2 1/2
V-1700-2	23 1/2	22	2 1/2	25 3/4	2 1/2
V-1700-3	25 1/4	24	1 1/2	27	2 1/2
V-1700-4	31 3/4	30	1 3/8	34 7/8	2 3/8
V-1700-5	38	36	2	40 1/2	3

Note: All dimensions are in inches.
*4 piece bolted frame.

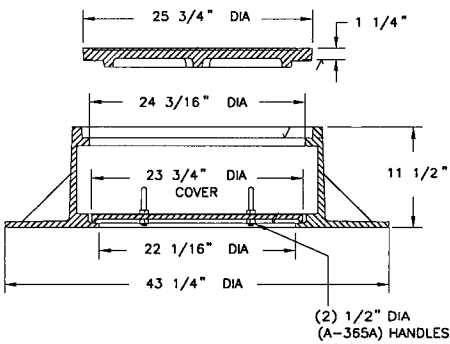
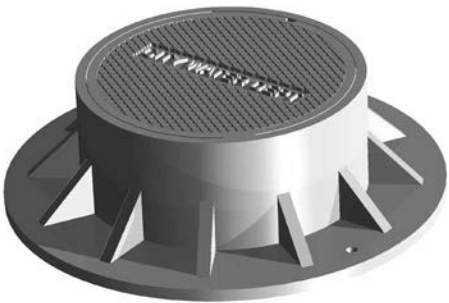
V-1701 FRAME & COVER

Light duty (Non-traffic)



1706 FRAME & COVER

Heavy duty
Machined bearing surfaces
Frost proof assembly
Accepts 1705 covers



Supplied By:

**TRENCHDRAIN
SUPPLY**

877-903-7246

www.trenchdrainsupply.com

